

Oregon Fusion LLC

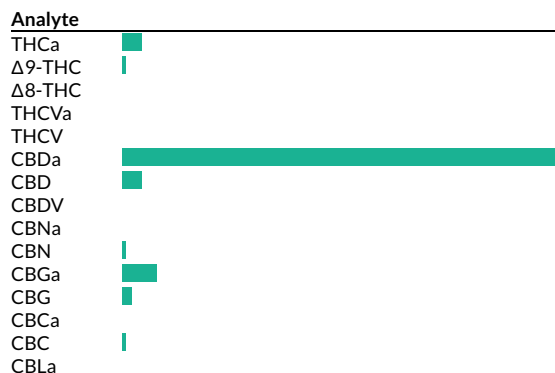
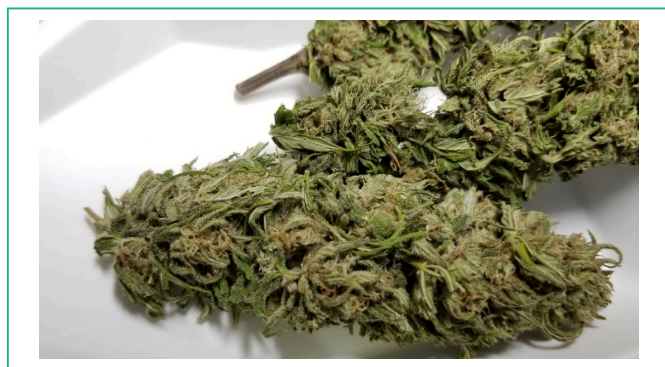
Boring, OR 97009
adam@oregonfusioncbd.com
(914) 850-4645
Lic. #AG-R1040925IHG

Sample: 1809CH0213.0780

Strain: OF-Sour Space Candy
Batch#: 1; Batch Size: 5 - grams
Sample Received: 09/17/2018; Report Created: 09/26/2018; Expires: 09/26/2019
Harvest/Production Date:
Sampling: Random; Environment: Room Temp

OF-Sour Space Candy

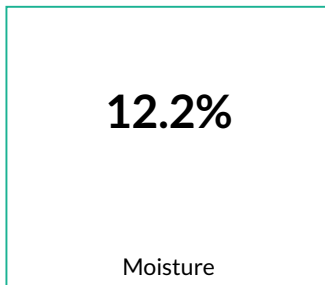
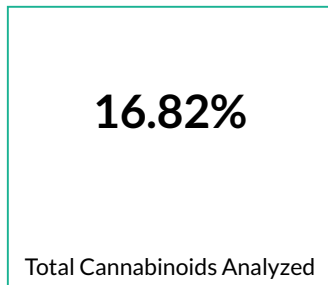
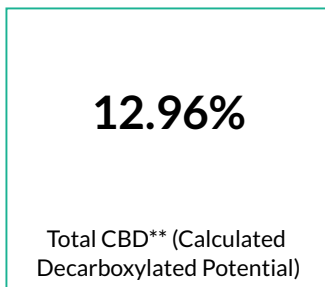
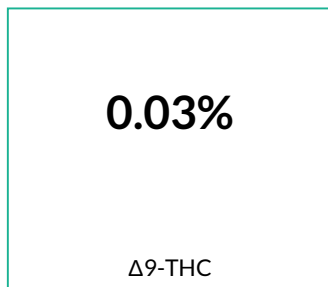
Plant, Flower - Cured
Harvest Process Lot: ; METRC Batch: ; METRC Sample:



Cannabinoids

240 HPLC3 20180920-3
09/20/2018

Complete



Analyte	LOQ	Mass	Mass
	mg/g	%	mg/g
THCa		0.61	6.1
Δ9-THC		0.03	0.3
Δ8-THC		<LOQ	<LOQ
THCVa		<LOQ	<LOQ
THCV		<LOQ	<LOQ
CBDa		14.12	141.2
CBD		0.58	5.8
CBDV		<LOQ	<LOQ
CBNa		<LOQ	<LOQ
CBN		0.06	0.6
CBGa		1.13	11.3
CBG		0.28	2.8
CBCa		<LOQ	<LOQ
CBC		0.02	0.2
CBLa		<LOQ	<LOQ
Total		16.82	168.2

*Total THC = THCa * 0.877 + d9-THC. **Total CBD = CBDa * 0.877 + CBD. LOQ = Limit of Quantification; NR = Not Reported; ND = Not Detected

Oregon Fusion LLC

Sample: 1809CH0213.0780

Boring, OR 97009
adam@oregonfusioncbd.com
(914) 850-4645
Lic. #AG-R1040925IHG

Strain: OF-Sour Space Candy
Batch#: 1; Batch Size: 5 - grams
Sample Received: 09/17/2018; Report Created: 09/26/2018; Expires: 09/26/2019
Harvest/Production Date:
Sampling: Random; Environment: Room Temp

OF-Sour Space Candy

Plant, Flower - Cured
Harvest Process Lot: ; METRC Batch: ; METRC Sample:



Terpenes

338 GCFID1 20180918-1
09/18/2018

Analyte	Mass %	Mass mg/g	LOQ %		Analyte	Mass %	Mass mg/g	LOQ %	
α-Pinene	0.35	3.5	0.02	<div style="width: 20px; height: 10px; background-color: #008000;"></div>	Isoborneol	<LOQ	<LOQ	0.02	
Camphene	<LOQ	<LOQ	0.02		Borneol	<LOQ	<LOQ	0.02	
Sabinene	<LOQ	<LOQ	0.02		Hexahydro Thymol	<LOQ	<LOQ	0.02	
(-) -β-Pinene	0.14	1.4	0.02	<div style="width: 10px; height: 10px; background-color: #008000;"></div>	α-Terpineol	<LOQ	<LOQ	0.02	
β-Myrcene	0.97	9.7	0.02	<div style="width: 40px; height: 10px; background-color: #008000;"></div>	γ-Terpineol	<LOQ	<LOQ	0.02	
α-Phellandrene	<LOQ	<LOQ	0.02		Nerol	<LOQ	<LOQ	0.02	
δ-3-Carene	<LOQ	<LOQ	0.02		Pulegone	<LOQ	<LOQ	0.02	
α-Terpinene	<LOQ	<LOQ	0.02		Geraniol	<LOQ	<LOQ	0.02	
p-Isopropyltoluene	<LOQ	<LOQ	0.02		Farnesene	<LOQ	<LOQ	0.02	
δ-Limonene	0.09	0.9	0.02	<div style="width: 5px; height: 10px; background-color: #008000;"></div>	α-Cedrene	<LOQ	<LOQ	0.02	
Eucalyptol	<LOQ	<LOQ	0.02		β-Caryophyllene	0.34	3.4	0.02	<div style="width: 20px; height: 10px; background-color: #008000;"></div>
Ocimene 1	<LOQ	<LOQ	0.02		α-Humulene	0.10	1.0	0.02	<div style="width: 5px; height: 10px; background-color: #008000;"></div>
Ocimene 2	0.10	1.0	0.02	<div style="width: 5px; height: 10px; background-color: #008000;"></div>	Valencene	0.03	0.3	0.02	<div style="width: 2px; height: 10px; background-color: #008000;"></div>
γ-Terpinene	<LOQ	<LOQ	0.02		Geranyl Acetate	0.30	3.0	0.02	<div style="width: 20px; height: 10px; background-color: #008000;"></div>
Sabinene Hydrate	<LOQ	<LOQ	0.02		cis-Nerolidol	0.12	1.2	0.02	<div style="width: 10px; height: 10px; background-color: #008000;"></div>
Fenchone	<LOQ	<LOQ	0.02		β-Nerolidol	0.16	1.6	0.02	<div style="width: 15px; height: 10px; background-color: #008000;"></div>
Terpinolene	0.33	3.3	0.02	<div style="width: 20px; height: 10px; background-color: #008000;"></div>	trans-Nerolidol	0.03	0.3	0.02	<div style="width: 2px; height: 10px; background-color: #008000;"></div>
Linalool	0.03	0.3	0.02	<div style="width: 2px; height: 10px; background-color: #008000;"></div>	Caryophyllene Oxide	<LOQ	<LOQ	0.02	
Endo-Fenchyl Alcohol	<LOQ	<LOQ	0.02		(-) -Guaiol	0.04	0.4	0.02	<div style="width: 2px; height: 10px; background-color: #008000;"></div>
Camphor	<LOQ	<LOQ	0.02		Cedrol	<LOQ	<LOQ	0.02	
(-) -Isopulegol	<LOQ	<LOQ	0.02		(-) -α-Bisabolol	0.06	0.6	0.02	<div style="width: 5px; height: 10px; background-color: #008000;"></div>

Primary Aromas



Method: GC-FID; based on dry weight; LOQ = Limit of Quantification; NR = Not Reported; ND = Not Detected

Oregon Fusion LLC

Sample: 1809CH0213.0780

Boring, OR 97009
adam@oregonfusioncbd.com
(914) 850-4645
Lic. #AG-R1040925IHG

Strain: OF-Sour Space Candy
Batch#: 1; Batch Size: 5 - grams
Sample Received: 09/17/2018; Report Created: 09/26/2018; Expires: 09/26/2019
Harvest/Production Date:
Sampling: Random; Environment: Room Temp

OF-Sour Space Candy

Plant, Flower - Cured
Harvest Process Lot: ; METRC Batch: ; METRC Sample:



Quality Control Data

Analytical Batch ID	QC Sample ID	Assay Name	QC Category Name
240 HPLC3 20180920-3	PMB09191801H	Cannabinoids	Blank

QC Notes

None

Compounds	Blank Result	Blank Max % (LOQ)	Blank Result %	Notes
THCa	0	0.002	<LOQ	-
Δ9-THC	0	0.002	<LOQ	-
CBDa	0	0.002	<LOQ	-
CBD	0	0.002	<LOQ	-



Oregon Fusion LLC

Sample: 1809CH0213.0780

Boring, OR 97009
adam@oregonfusioncbd.com
(914) 850-4645
Lic. #AG-R1040925IHG

Strain: OF-Sour Space Candy
Batch#: 1; Batch Size: 5 - grams
Sample Received: 09/17/2018; Report Created: 09/26/2018; Expires: 09/26/2019
Harvest/Production Date:
Sampling: Random; Environment: Room Temp

OF-Sour Space Candy

Plant, Flower - Cured
Harvest Process Lot: ; METRC Batch: ; METRC Sample:



Quality Control Data

Analytical Batch ID	QC Sample ID	Assay Name	QC Category Name
240 HPLC3 20180920-3	PLCS09191801H	Cannabinoids	Lab Control Sample

QC Notes

None

Compounds	LCS Result (%)	LCS Spike	LCS % Rec	% Limits	Notes
THCa	7.11	6.57	108.22	70 - 130	-
Δ9-THC	7.56	7.32	103.28	70 - 130	-
CBDa	2.34	2.19	106.85	70 - 130	-
CBD	2.45	2.3	106.52	57 - 143	-

Oregon Fusion LLC

Sample: 1809CH0213.0780

Boring, OR 97009
adam@oregonfusioncbd.com
(914) 850-4645
Lic. #AG-R1040925IHG

Strain: OF-Sour Space Candy
Batch#: 1; Batch Size: 5 - grams
Sample Received: 09/17/2018; Report Created: 09/26/2018; Expires: 09/26/2019
Harvest/Production Date:
Sampling: Random; Environment: Room Temp

OF-Sour Space Candy

Plant, Flower - Cured
Harvest Process Lot: ; METRC Batch: ; METRC Sample:



Quality Control Data

Analytical Batch ID	QC Sample ID	Assay Name	QC Category Name
240 HPLC3 20180920-3	PMS09191801H	Cannabinoids	Spike

QC Notes

None

Compounds	LOQ	Matrix Duplicate % RPD	Duplicate RPD Notes	Matrix Spike % Rec	% Limits	Notes
THCa	0.002	8.7	<20	105	70 - 130	-
Δ9-THC	0.002	0	<20	100	70 - 130	-
CBDa	0.002	7.57	<20	33	70 - 130	Below Limit Range
CBD	0.002	22.22	>20	92	70 - 130	-